



# 2015 JOHN DEERE 650KXLT

\$63,867.96 USD\*

USD price is  
for information  
only. Payment  
on the site is  
in Canadian  
dollars

**\$89,000.00**

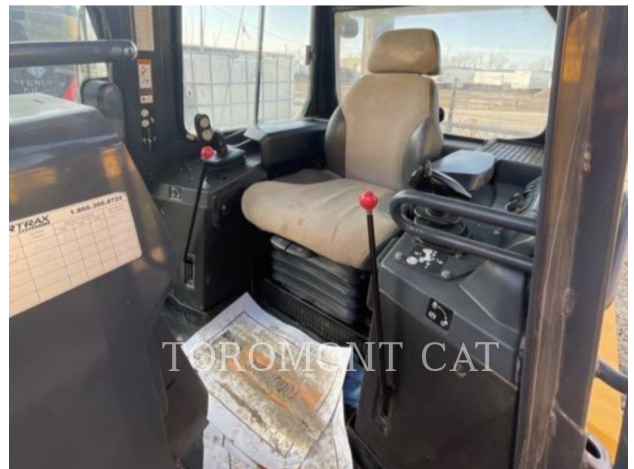
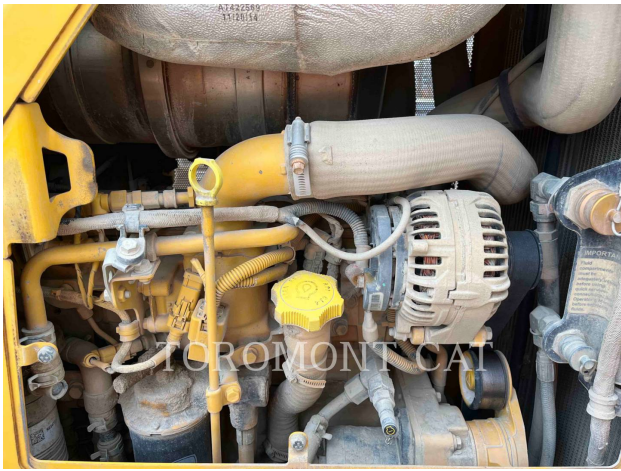
**CAD**

## Images









## Additional Information

Manufacturer	JOHN DEERE
Year	2015
Hours	5,265 hours
Location	Orillia, ON
Serial number	1T0650KXVFF277682
Features	<ul style="list-style-type: none"><li>• Air Conditioner</li><li>• Air Suspension Seat</li><li>• Auxiliary Hydraulics Pressure - High Pressure</li><li>• Beacon</li><li>• Blade Shake</li><li>• Blade Tilt - Dual Tilt</li><li>• Blade Type - VPat</li><li>• Combined Hydraulics - Two Way</li><li>• Diff Steer</li><li>• Engine Enclosures</li><li>• Lighting</li><li>• Mirrors</li><li>• Radio - AM FM Radio</li><li>• ROPS - Enclosed</li><li>• Steering Type - Joystick</li></ul>
Inventory Type	Used
Model Number	650KXLT
Seller	Toromont Cat
Deposit	\$500.00 CAD

## Certifications

## Payment details

At the time of purchase, a \$500 deposit per equipment will be charged to your credit card.

Once the deposit is processed, you will receive an email that confirms your equipment is reserved and you will get detailed instructions on how to finalize your equipment purchase. A seller representative will contact you within one (1) business day to assist you in this process.

The balance must be paid by wire transfer. If payment is not received within three (3) business days, the equipment will no longer be reserved, and your deposit may be refunded.

### Deposit Refund

A Deposit is refundable up to the close of business on the third business day following the payment of the Deposit. To request a refund, submit your request to [tequip@toromont.com](mailto:tequip@toromont.com) with your Order Confirmation Number, a Toromont Equip representative will contact you to finalize the refund as per the terms of the General Sale & Service Agreement available at Check Out.

### Non Canadian Buyers

The buyer assumes full responsibility for shipping the purchased equipment. If the equipment is being exported, the buyer must contact the customs authorities in the importing country to verify that the equipment is authorized under an import permit. The buyer must also check if any special measures are required when shipping heavy equipment.

\*USD price is for information only. Payment on the site is in Canadian dollars.

## Financing

---

To learn about our financing options, please visit: <https://www.toromontequip.com/en/financing>  
Some products and equipment might not be eligible for financing.

## Shipping & pickup

---

Buyer is responsible for shipping arrangements and all costs related to transporting the equipment including permits, tear-down, cranes, or other incidentals that may be required to legally transport your purchase.

Following the settlement of the outstanding balance, arrangements must be made immediately to have equipment picked up within ten (10) business days as Toromont may, at its discretion, assess storage fees.

## FAQ

---

The product images shown are for illustration purposes only and may not be an exact representation of the product. Depicted attachments may not be included. You are advised not to rely on the product image. Toromont reserves the right to change product images at any time without notice and without liability accruing to Toromont or the company selling the equipment.

You can contact one of our representatives from Monday to Friday, 7 a.m. to 5 p.m. (EST) at [1 833 953-7847](tel:18339537847).

