



E2860C Paving Attachment

\$11,481.88 USD*

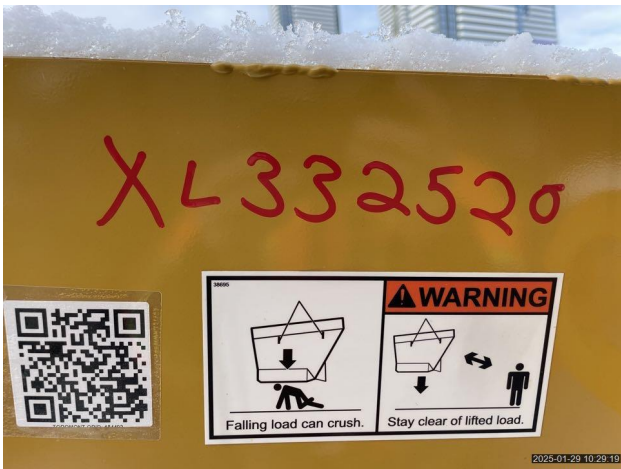
USD price is for information only. Payment on the site is in Canadian dollars

\$16,000.00

CAD

Images





Description

PAVING

Additional Information

Manufacturer	WEILER
Year	2025
Location	ST. JOHN'S, NL
Serial number	UK332520
Stock number	XL332520
Inventory Type	Surplus
Model Number	E2860C
Seller	Toromont Cat
Machine Family	paving

Certifications

Payment details

At the time of purchase, a \$500 deposit per equipment will be charged to your credit card.

Once the deposit is processed, you will receive an email that confirms your equipment is reserved and you will get detailed instructions on how to finalize your equipment purchase. A seller representative will contact you within one (1) business day to assist you in this process.

The balance must be paid by wire transfer. If payment is not received within three (3) business days, the equipment will no longer be reserved, and your deposit may be refunded.

Deposit Refund

A Deposit is refundable up to the close of business on the third business day following the payment of the Deposit. To request a refund, submit your request to tequip@toromont.com with your Order Confirmation Number, a Toromont Equip representative will contact you to finalize the refund as per the terms of the General Sale & Service Agreement available at Check Out.

Non Canadian Buyers

The buyer assumes full responsibility for shipping the purchased equipment. If the equipment is being exported, the buyer must contact the customs authorities in the importing country to verify that the equipment is authorized under an import permit. The buyer must also check if any special measures are required when shipping heavy equipment.

*USD price is for information only. Payment on the site is in Canadian dollars.

Financing

To learn about our financing options, please visit: <https://www.toromontequip.com/en/financing>
Some products and equipment might not be eligible for financing.

Shipping & pickup

Buyer is responsible for shipping arrangements and all costs related to transporting the equipment including permits, tear-down, cranes, or other incidentals that may be required to legally transport your purchase.

Following the settlement of the outstanding balance, arrangements must be made immediately to have equipment picked up within ten (10) business days as Toromont may, at its discretion, assess storage fees.

FAQ

The product images shown are for illustration purposes only and may not be an exact representation of the product. Depicted attachments may not be included. You are advised not to rely on the product image. Toromont reserves the right to change product images at any time without notice and without liability accruing to Toromont or the company selling the equipment.

You can contact one of our representatives from Monday to Friday, 7 a.m. to 5 p.m. (EST) at [1 833 953-7847](tel:18339537847).

